

CSA – Cello Sewer Alarm

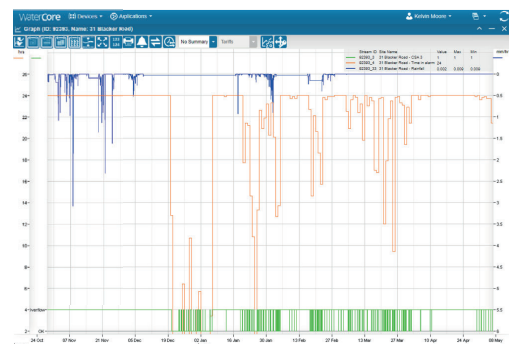
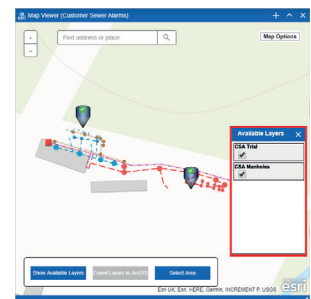


A cost effective and robust solution for remotely monitoring flooding events in gullies and wastewater chambers.

Gullies and sewer chambers are continuously monitored to alert network operators on flood events over 2G (GPRS), 3G, NB-IoT and LTE Cat M1 networks. Smart analytics provide critical insight into asset performance for early blockage detection, helping utilities prioritise and optimise interventions to prevent flooding events from occurring.

Key Features

- Reliable flood monitoring data - accessible at all times
- Web based analytics provide predictive maintenance and trend analysis for flood-prone sites
- Suitable for monitoring pre-set water level (flood conditions) in different types of gullies and chambers
- Accessories can be provided to suit different types of installation
- Intrinsically safe for Zone 0 deployment
- Bi-directional communication facilitating remote configuration
- Low power design providing typically > 7 year battery life
- Protected against water ingress to IP68
- Internal & External Antenna option
- User replaceable battery



Technical Specifications

Logger specification

Modem	Antenna: Internal <ul style="list-style-type: none"> Support for 2G, 3G, NB-IoT and LTE Cat M1 frequencies Remote Radio Access Technology (RAT) switching SIM: User replaceable SIM card
Serial Port	Type: Full duplex, asynchronous
Clock	Type: Crystal controlled calendar clock with leap year adjustment <ul style="list-style-type: none"> Synchronises clock to local network at regular intervals
Alarm Dial-Out	<ul style="list-style-type: none"> Daily heartbeat check message Alarm on pre-set water level Low battery alarm
Supply	Life: Typical battery life >7 years (daily transmission) <ul style="list-style-type: none"> Internally powered by a single, user replaceable battery Configuration and data retained during battery replacement
Environmental	Operating ambient temperature: -30°C to +60°C Ingress protection classification: IP68 (submersion at 1m depth for > 24 hours)
Certification	Certified for use in Zone 0 hazardous locations Certificates: Sira 15ATEX2368X & IECEX SIR 15.0139X Ex ia IIB T4 Ga (Tamb = -30°C to +60°C)
Mechanical	Dimensions (mm): 129 (h) x 127 (w) x 77 (d) Weight: 0.640 kg

