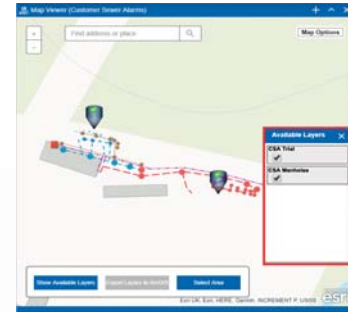


A cost effective, robust universal solution for remotely monitoring flooding events in customer gullies or sewer and waste water chambers

Gullies and sewer chambers are continuously monitored to alert network operators on flood events over cellular networks. Smart analytics provide critical information regarding when and for how long and with what frequency a site is in an alarm condition.

Key Features

- Reliable site flood monitoring data, accessible at anytime
- Web based analytics provide predictive maintenance and trend analysis for flood-prone sites
- Helps utilities prioritise sites and optimise network operations
- Suitable for monitoring pre-set water level (flood conditions) in different types of gullies and chambers
- Accessories can be provided to suit different types of installation
- Intrinsically safe for Zone 0 deployment
- 2G / 3G cellular based communications
- Bi-directional communication facilitating remote configuration
- Typical > 5 year battery life
- Protected against water ingress to IP68



Technical Specifications

Logger specification

Modem	Antenna: Internal – Support for 2G / 3G frequencies SIM: User replaceable SIM card
Serial Port	Type: Full duplex, asynchronous
Clock	Type: Crystal controlled calendar clock with leap year adjustment – Synchronises clock to local network at regular intervals
Alarm Dial-Out	– Daily heartbeat check message – Alarm on pre-set water level – Low battery alarm
Environmental	Operating ambient temperature: -30°C to +60°C Ingress protection classification: IP68 (submersion at 1m depth for > 24 hours)
Certification	Certified for use in Zone 0 hazardous locations Certificates: Sira 15ATEX2368X & IECEx SIR 15.0139X Ex ia IIB T4 Ga (Tamb = -30°C to +60°C)
Mechanical	Dimensions (mm): 129 (h) x 127 (w) x 77 (d) Weight: 0.640 kg

