

Metrolog

Flow and Pressure Data Loggers

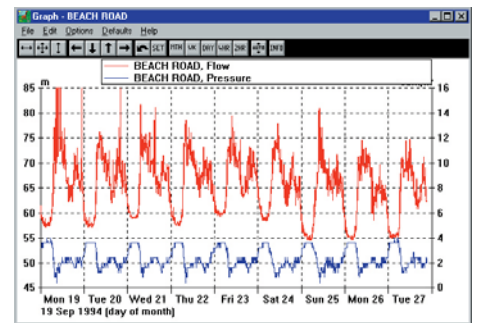
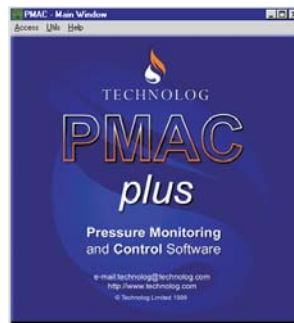


The Metrolog range of data loggers has been developed to monitor and to record pressures and flows within water distribution systems.



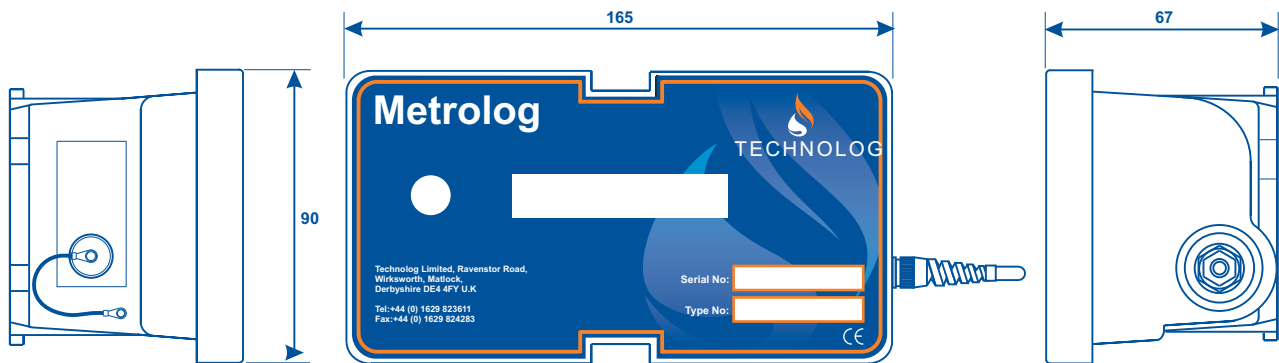
- Light-activated LCD
- Internally powered and housed in a robust, fully waterproof enclosure
- Battery life in excess of 5 years
- Compatible with Technolog's communication and configuration software for PCs, Psion Organiser and Workabout
- Metrolog H and P data loggers feature an integral pressure transducer
- Remote communications options

Comprehensive data analysis is provided by Technolog's Windows™-based PMAC software



Engineering Solutions for the Utilities

Technolog can also provide a complete installation and maintenance service



Inputs	Absolute pressure Bi-directional flow - Metrolog H and P Uni-directional flow - Metrolog P and F
Pressure Input	Input Range: 100 or 200 metre head of water as standard (other ranges, consult factory) Operating Temperature Range: +1 to 30°C (water) Accuracy/Resolution: 0.5% of range Pressure Port: 1/8" BSP female thread fitted with male probe
Flow Input	Channel Type: Count: counted over and recorded at preset intervals
Serial Port	Type: Optically-isolated, full duplex, asynchronous Data Rate: 1200/1200 baud transmit/receive, V22 for remote communication
Memory	Type: Solid-state, non-volatile Size: 32 Kbyte, allocable between channels as required Data Retention: Life of battery
Clock	Type: Crystal-controlled calendar clock, with leap year adjustment
Clock Accuracy	100 seconds per month maximum error over operating temperature range
Supply	Type: Internally powered by single cell, battery change at factory Life: Greater than 5 years or 1 million pressure readings
Recording	Recording Interval: Programmable between 1 second and 4 hours Logging Method: Time-based or threshold logging Data Storage: Rotating store or store until full
Environmental	Operating Temperature: -20°C to +50°C Protection Classification: IP68
Connectors	Serial port, 4-way Flow input, 3-way (if fitted), conforming to MIL-C-26482
Mechanical	Weight: 600 g

For further information, contact:

Technolog Limited
Ravenstor Road
Wirksworth
Matlock
Derbyshire DE4 4FY
United Kingdom

Tel: +44 (0)1629 823611
Fax: +44 (0)1629 824283

E-mail: technolog@technolog.com
Internet: www.technolog.com